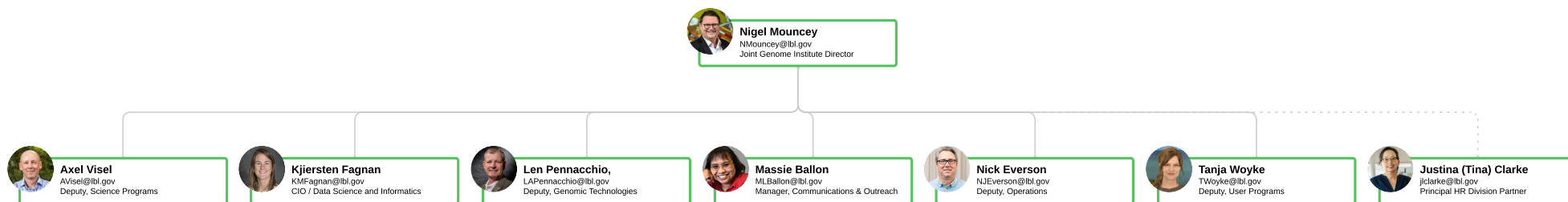


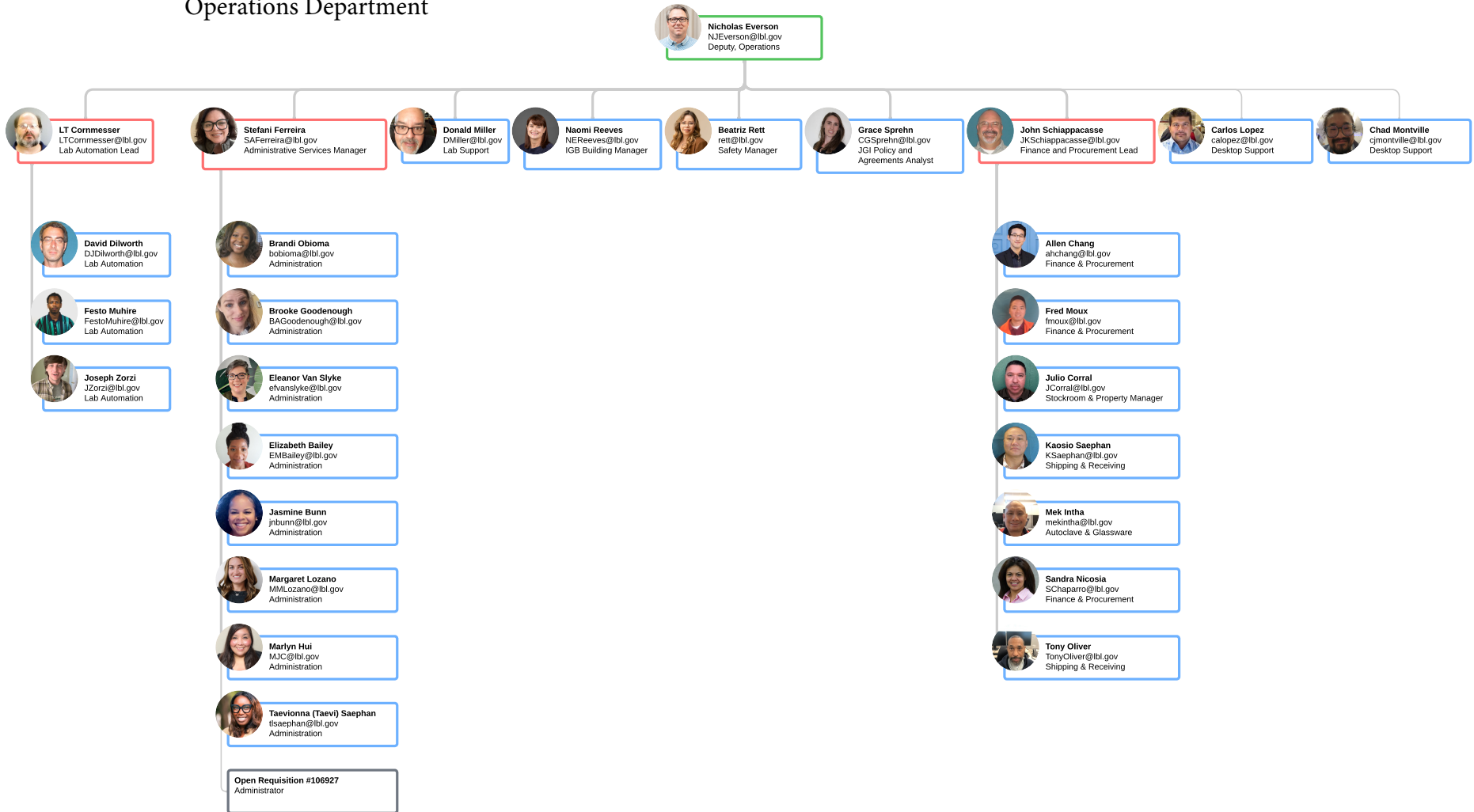
Leadership Team



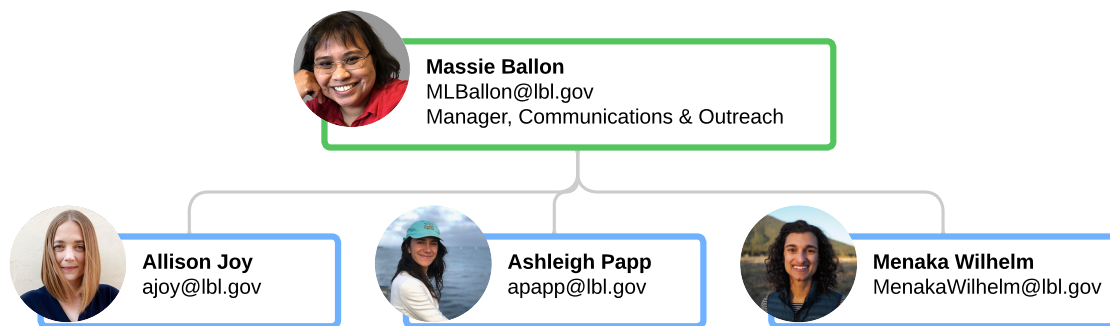
COLOR LEGEND

Green = JLT
Red = Supervisor or Manager
Blue = Employee

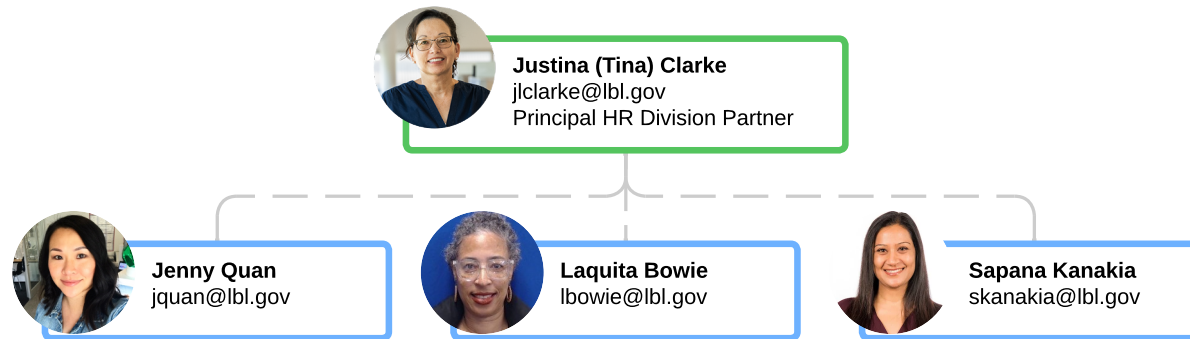
Operations Department



Communications & Outreach



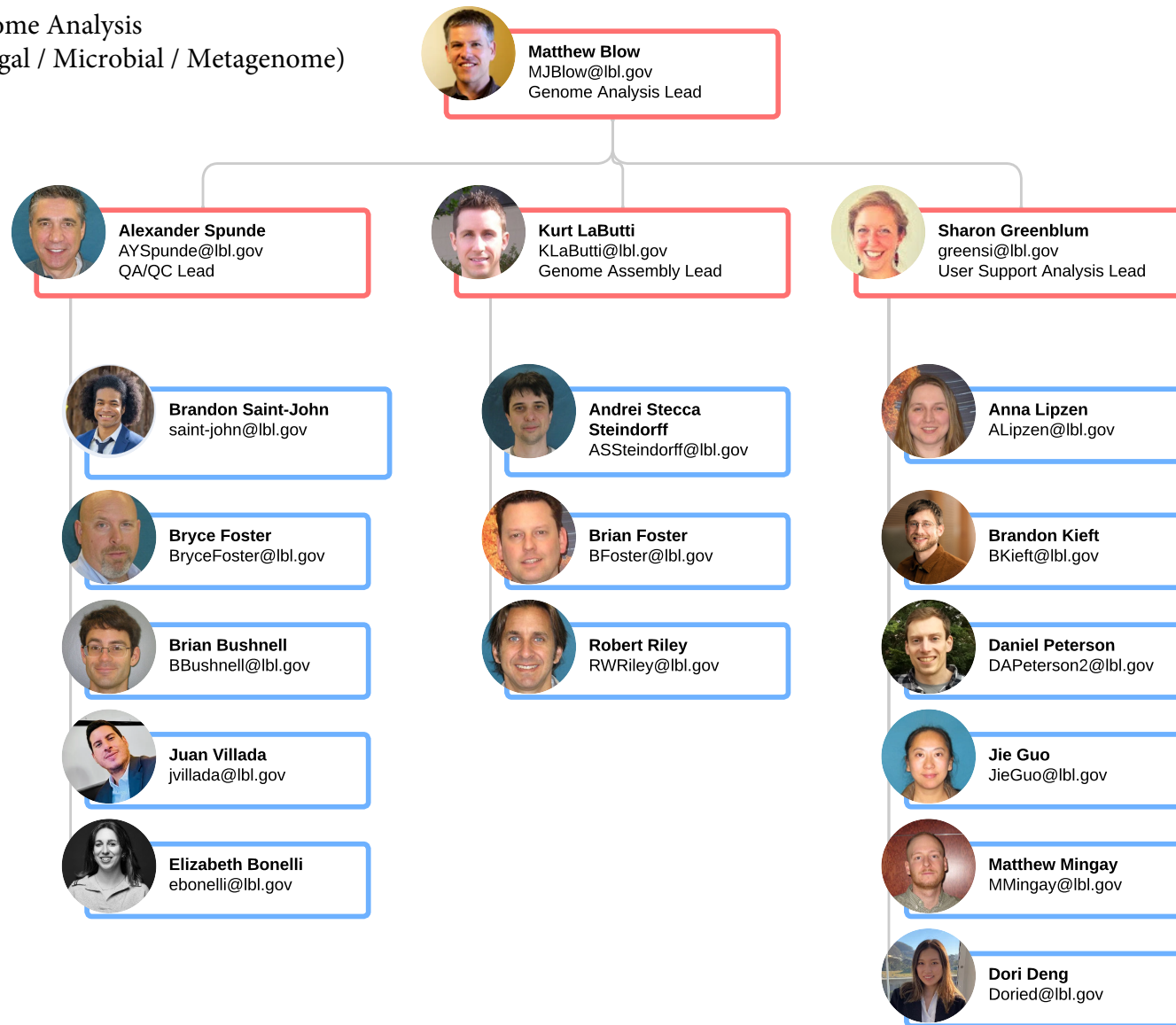
Human Resources



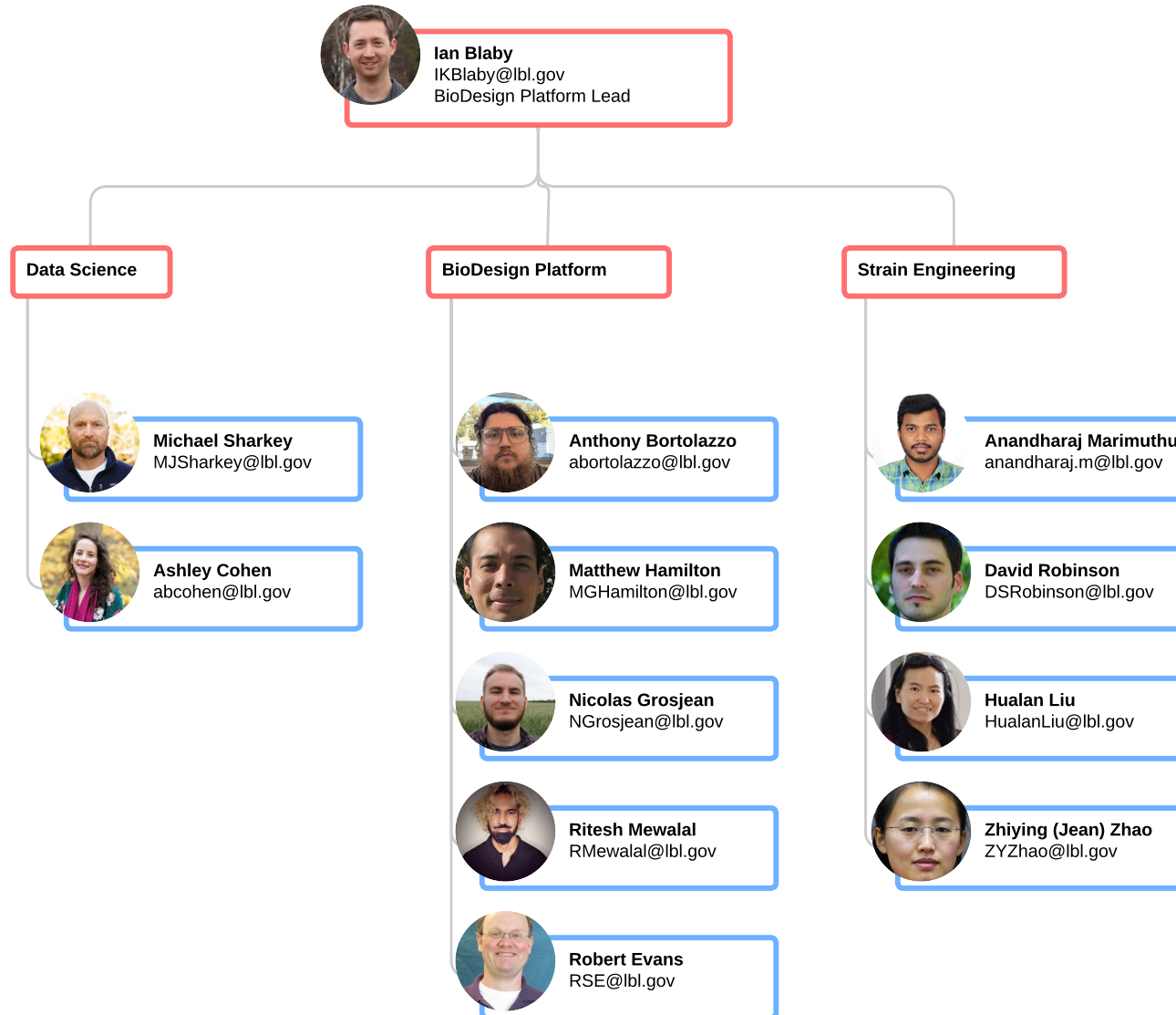
Genomic Technologies



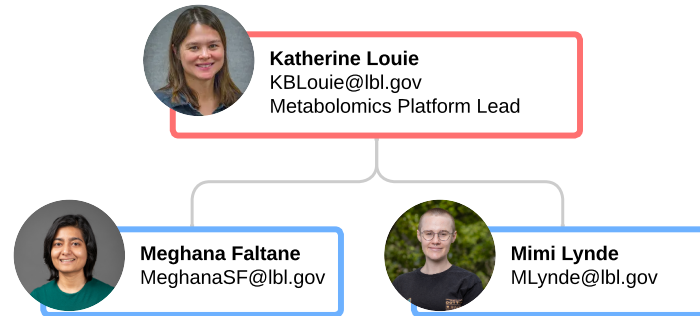
Genome Analysis
(Fungal / Microbial / Metagenome)



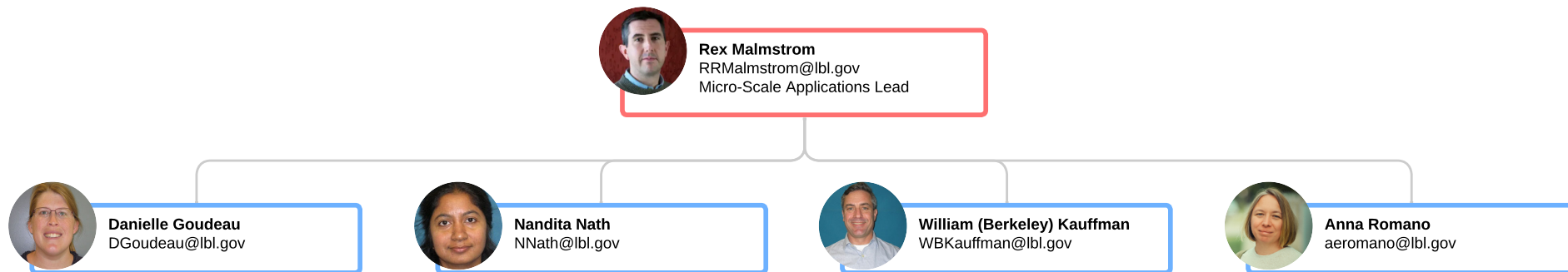
BioDesign Platform



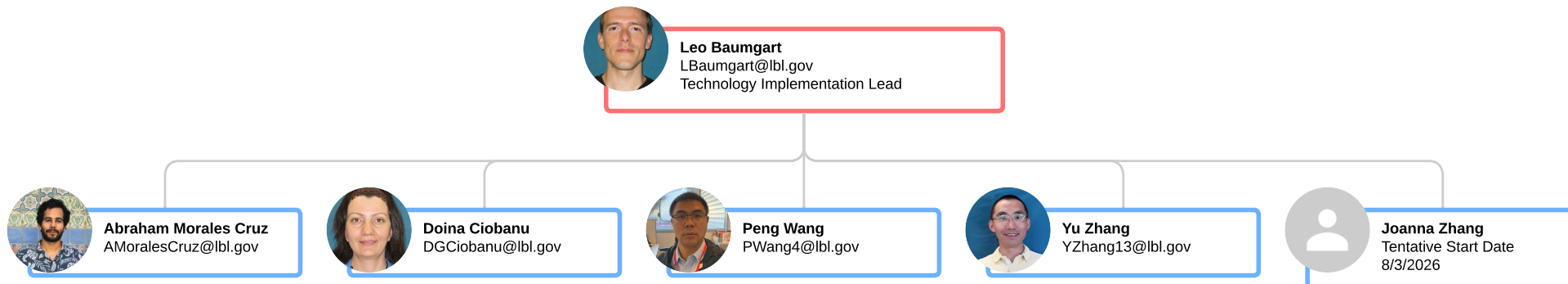
Metabolomics Platform



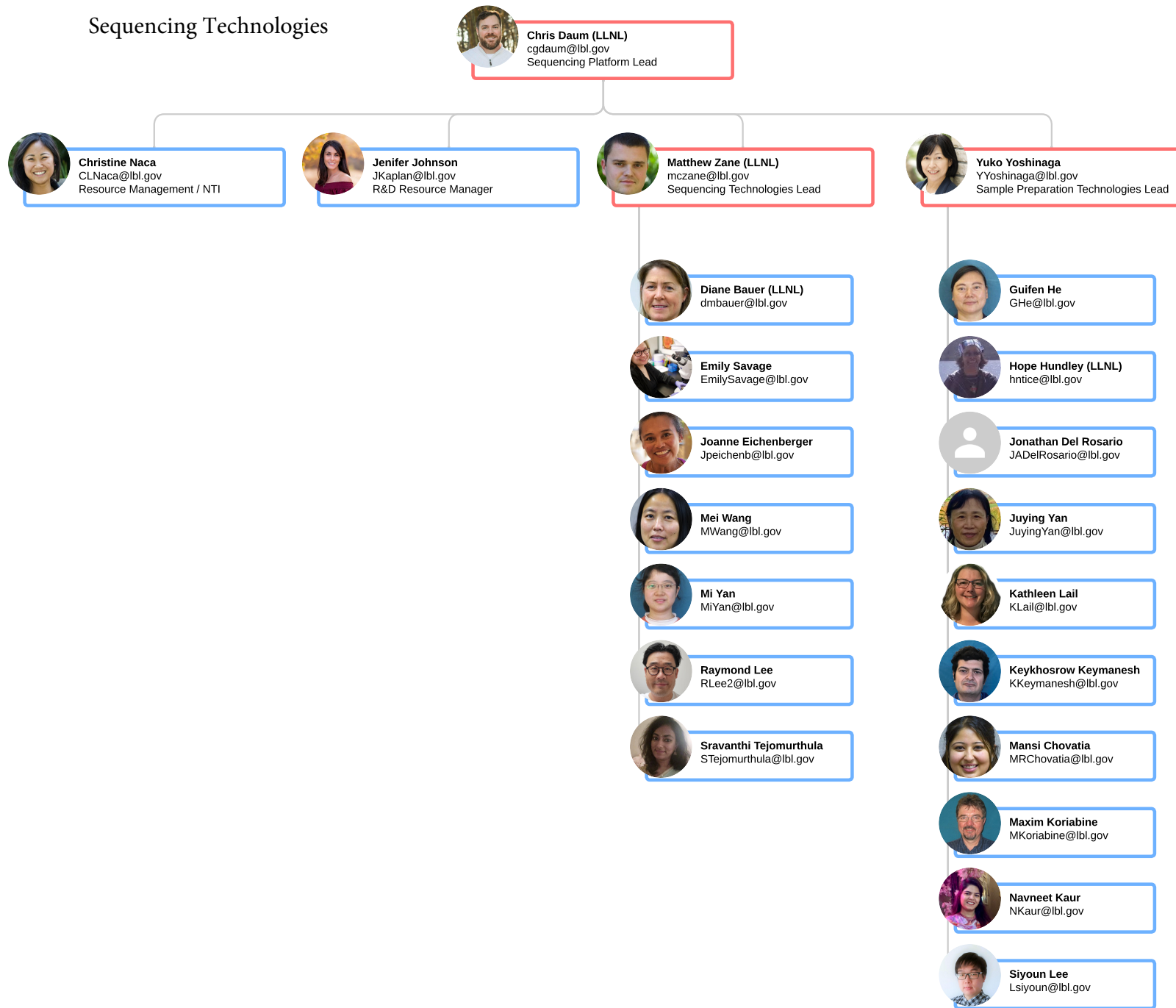
Micro-Scale Applications



Technology Implementation



Sequencing Technologies




Science Programs




Axel Visel
AVisel@lbl.gov
Deputy, Science Programs

Integrative Genomics Programs



Axel Visel
AVisel@lbl.gov
Plant Microbial Interactions Lead




Nigel Mouncey
NMouncey@lbl.gov
Secondary Metabolites Program Head



Trent Northen
trnorthen@lbl.gov
Metabolomics Program Head




Yasuo Yoshikuni
Yoshikuni@lbl.gov
Synthesis Science Program Head




Crysten Blaby-Haas
cblaby@lbl.gov
Bionanomolecular Materials Science

Prokaryote Programs



Emiley Eloe-Fadrosh
EAloeFadrosh@lbl.gov
Metagenome Science Program Head



Nikos Kyrpides
NCKyrpides@lbl.gov
Microbiome Data Science Lead




Tanja Woyke
TWoyke@lbl.gov
Microbial Genome Science Program Head


Eukaryote Programs



Igor Grigoriev
IVGrigoriev@lbl.gov
Fungal & Algal Program Head

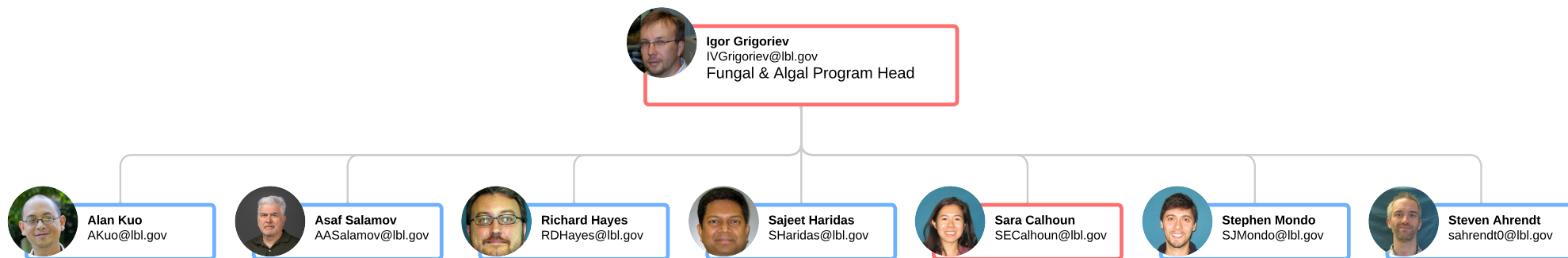


Jeremy Schmutz
jschmutz@hudsonalpha.org
Plant Program Head (HudsonAlpha)

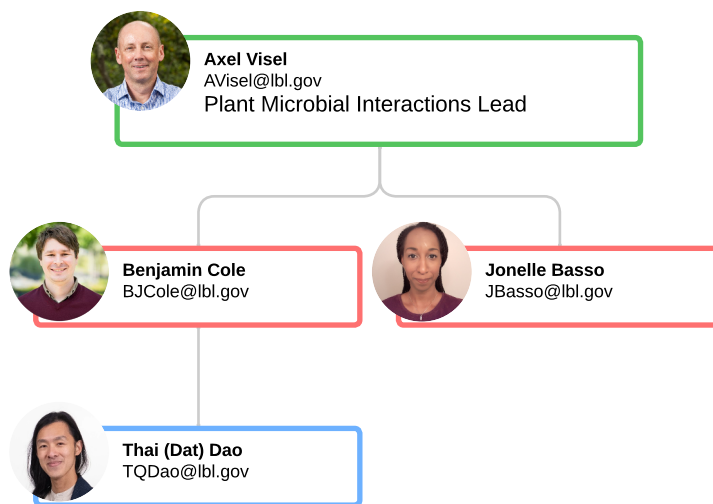


John Vogel
JPVogel@lbl.gov
West Coast Plant Genomics Lead

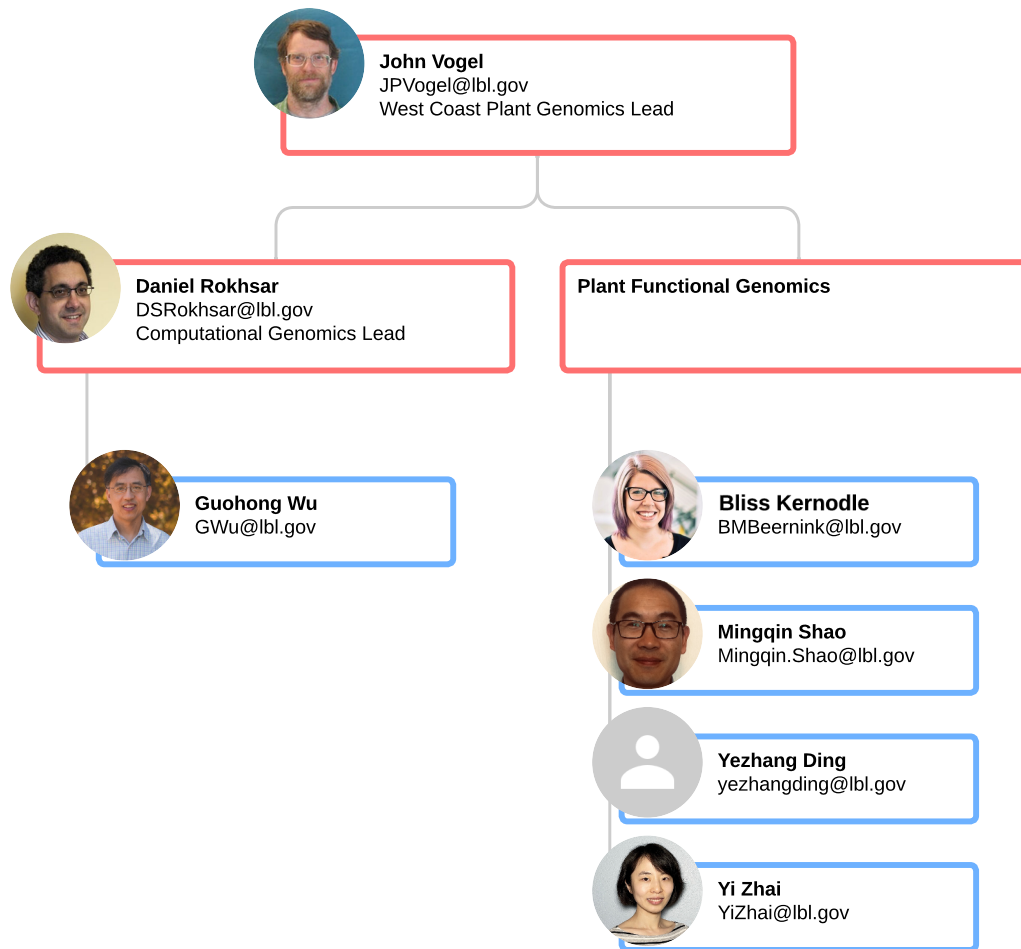
Fungal & Algal Science Program



Plant Microbial Interactions Science Program



West Coast Plant Genomics



Metabolomics Science Program

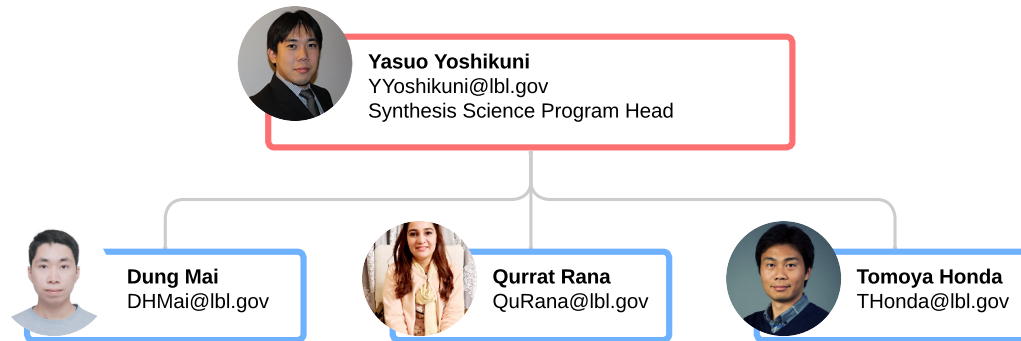


Trent Northen
trnorthen@lbl.gov
Metabolomics Program Head

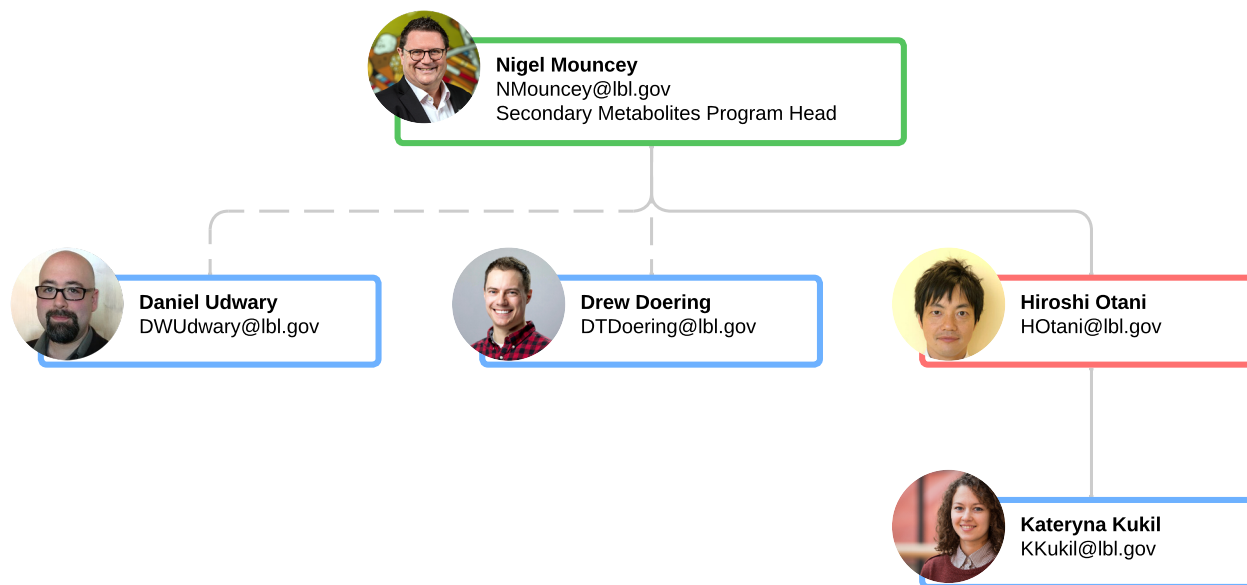


Ben Bowen
bpbowen@lbl.gov

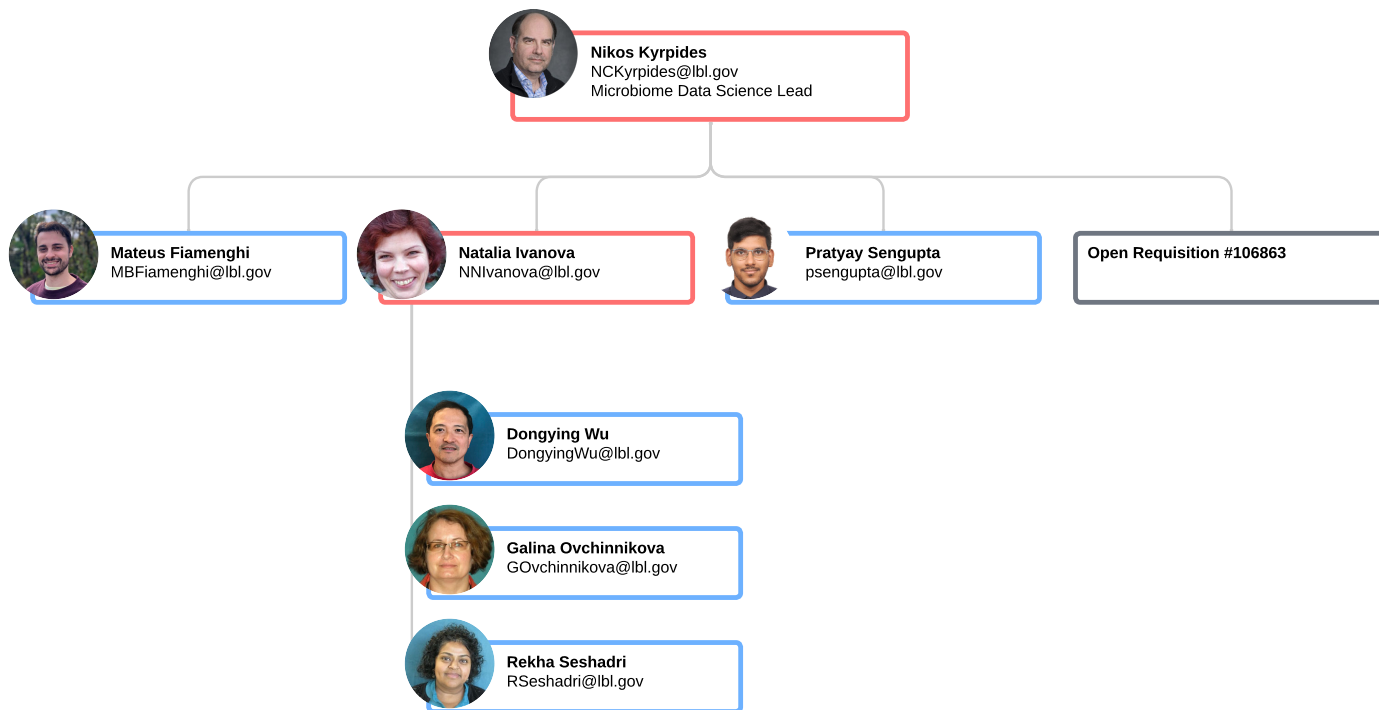
Synthesis Science User Program



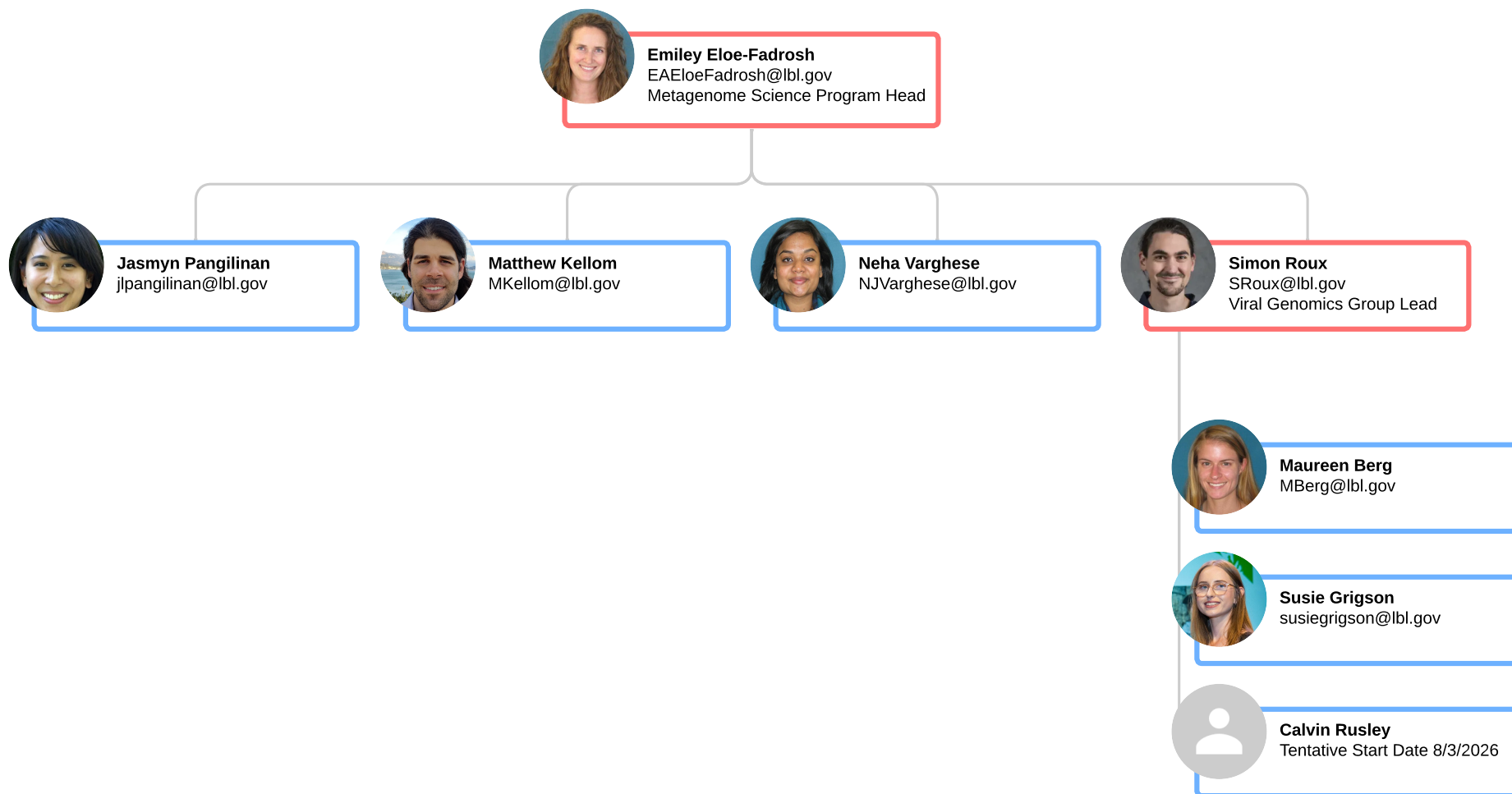
Secondary Metabolites Science Program



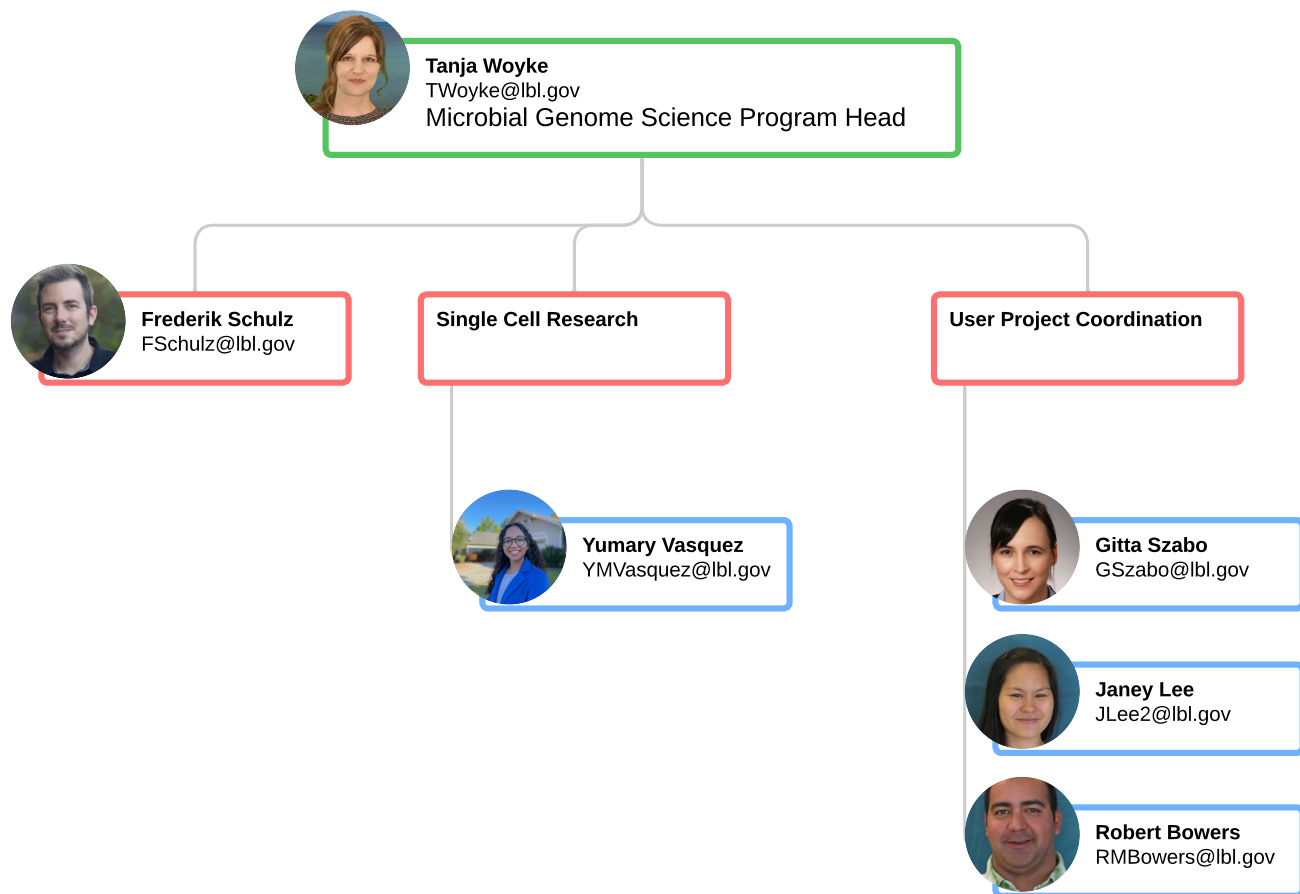
Microbiome Data Science Program



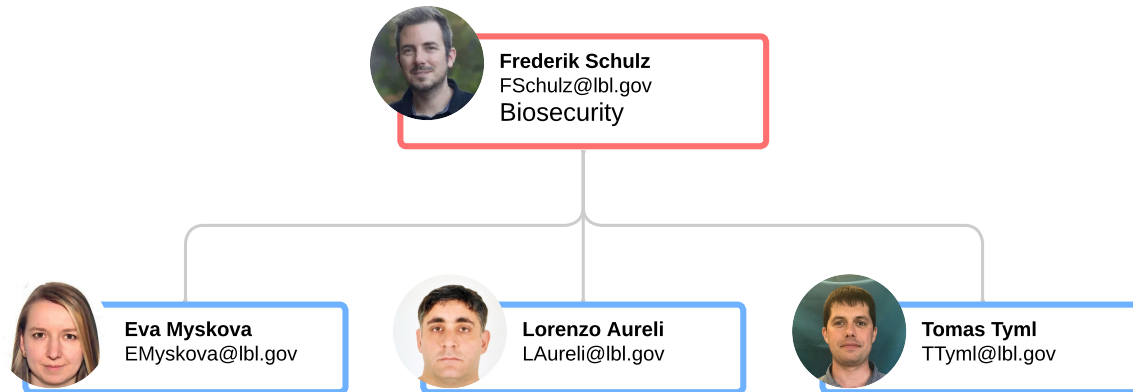
Metagenome Science Program



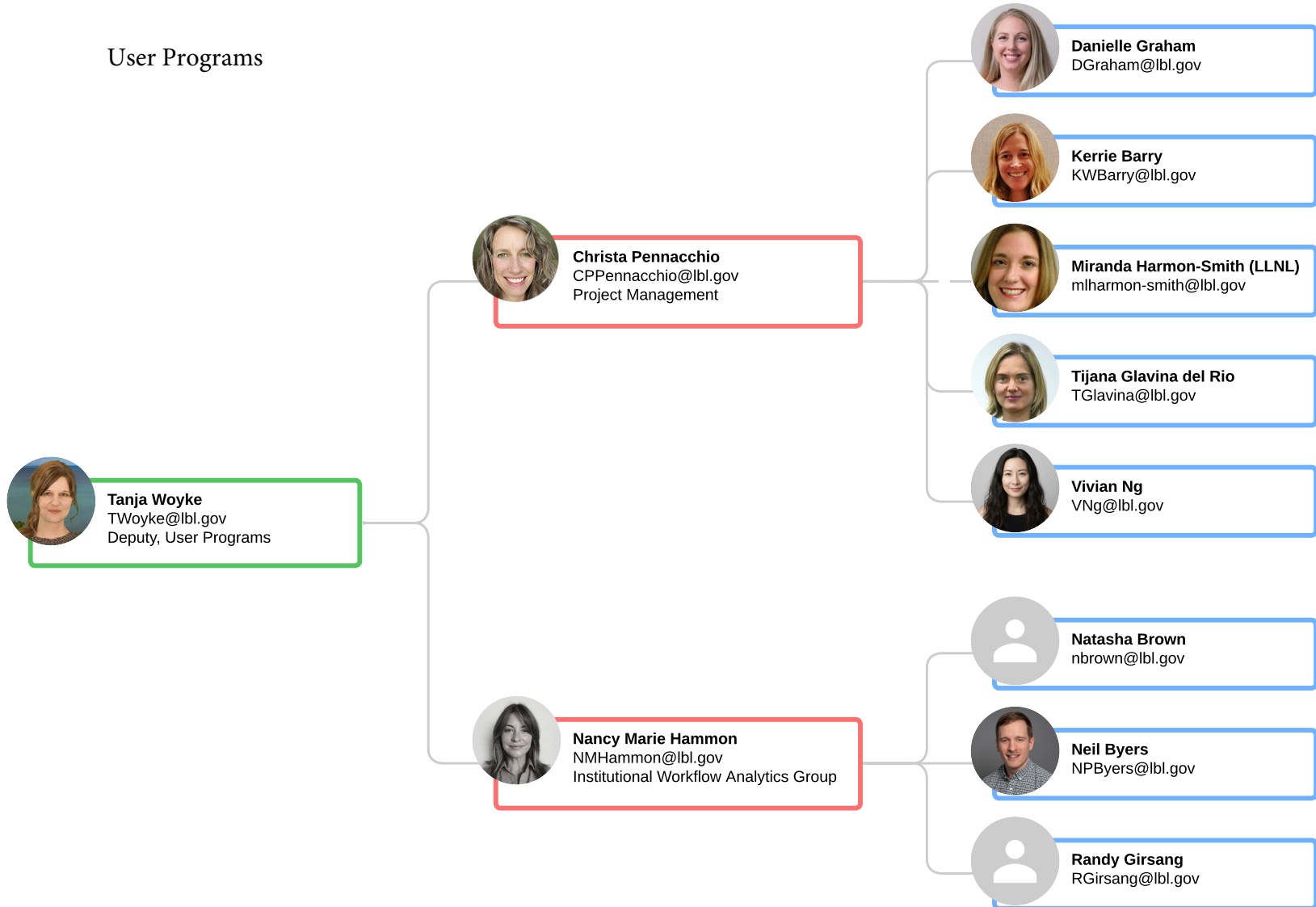
Microbial Genome Science Program



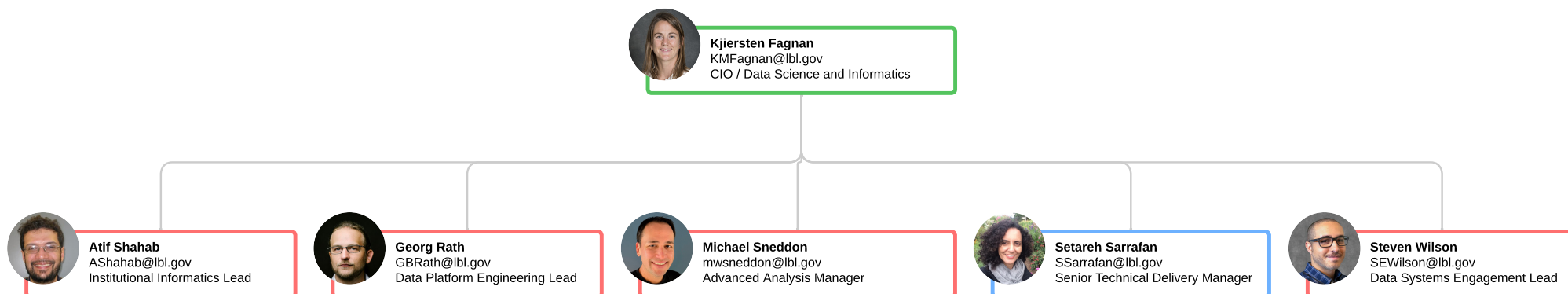
Biosecurity



User Programs



DSI - Leadership



Data Platform Engineering



Georg Rath
GBRath@lbl.gov
Data Platform Engineering Lead



Alexander Swafford
ASwafford@lbl.gov



Alexandre Poliakov
AVPoliakov@lbl.gov



Brian Yumae
BSYumae@lbl.gov



Cindy Li
cindyli@lbl.gov



Cody Webb
CodyWebb@lbl.gov



Darin Baumgartel
Tentative Start Date
8/3/2026



Dimitrios Stamatis
DAStamatis@lbl.gov



Drew Doering
DTDoering@lbl.gov



Matthew Dunford
MDunford@lbl.gov




Nathan Berkowitz
NBerkowitz@lbl.gov



Roman Nikitin
RNikitin@lbl.gov


Data Systems Engagement




Steven Wilson
SEWilson@lbl.gov
Data Systems Engagement Lead




Chris Beecroft
CJBeecroft@lbl.gov




Daniel Udvary
DWUdvary@lbl.gov



Daniela Cassol
DCassol@lbl.gov



Deanna Beatty
dsbeatty@lbl.gov



Igor Shabalov
IShabalov@lbl.gov



Jeremy Phillips
JLPhillips@lbl.gov




Ken Chu
KLChu@lbl.gov



Patrick Davidson
PADavidson@lbl.gov





Ramani Kothadia
ramanik@lbl.gov





Tatyana Smirnova
TSmirnova@lbl.gov


Advanced Analysis


 **Michael Sneddon**
mwsneddon@lbl.gov
Advanced Analysis Manager


 **Marcel Huntemann**
MHuntemann@lbl.gov


 **Mario Melara**
MAMelara@lbl.gov


 **Nicole Free**
NLFree@lbl.gov


 **Nicolas Haas**
nhaas@lbl.gov


 **Rob Egan**
RSEgan@lbl.gov


 **Seung-Jin Sul**
SSul@lbl.gov

 **Stephan Ritter**
SRitter@lbl.gov

 **Sumaira Zaman**
SZaman@lbl.gov


 **Supratim Mukherjee**
SupratimMukherjee@lbl.gov

 **TBK Reddy**
TBReddy@lbl.gov

 **Tomas Bruna**
TBruna@lbl.gov

 **Valerie Skye**
vaskye@lbl.gov

 **Zhong Wang**
ZhongWang@lbl.gov

 **Open Requisition #106681**

 **Open Requisition #106682**

Institutional Informatics

